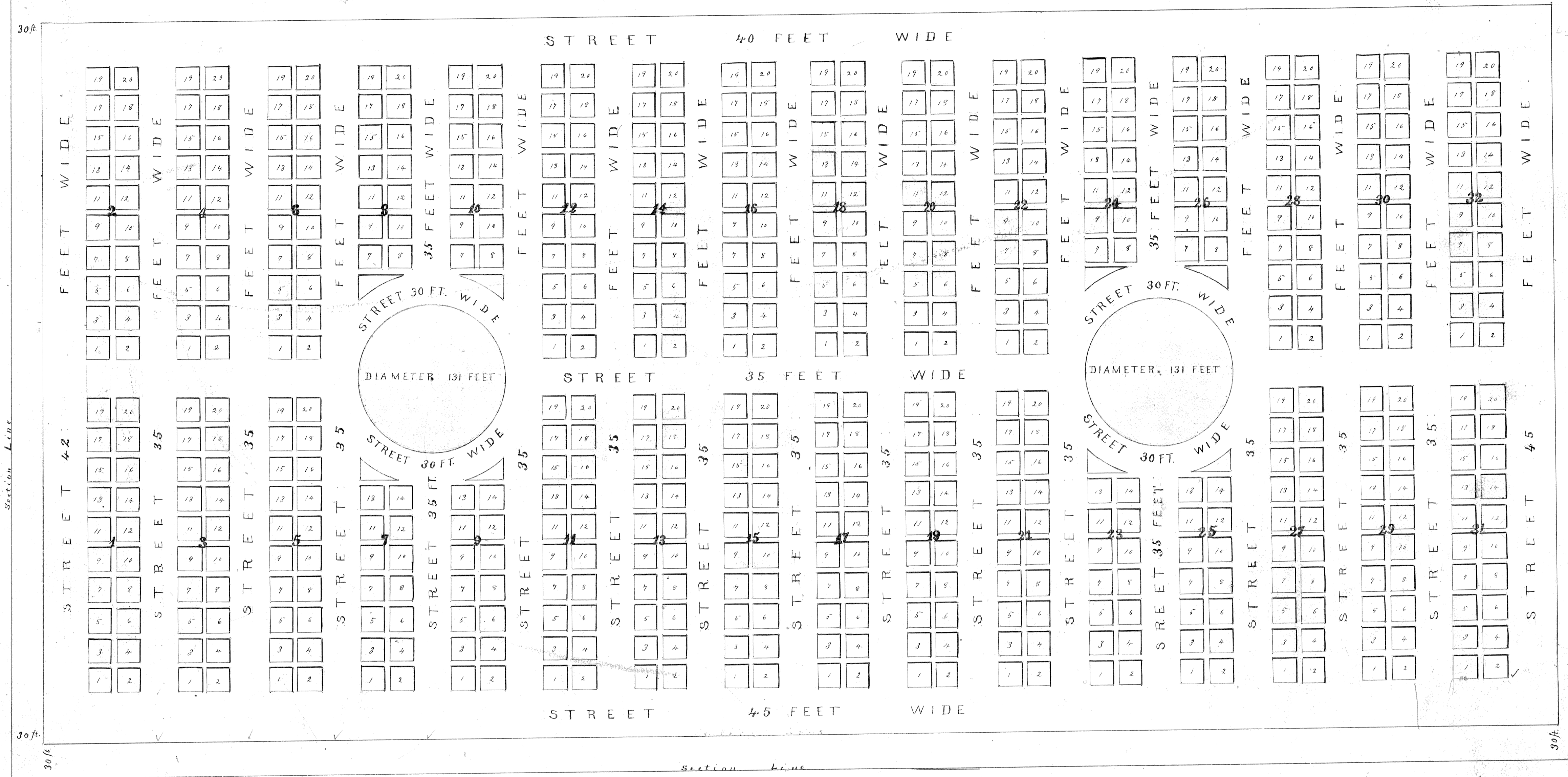


McPherson Cemetery

SCALE 160 FEET TO ONE INCH



The area of McPherson Cemetery is Twenty acres, being the South half of the South west quarter of the South west quarter of Section Twenty Seven, Township Nineteen, South, Range Three west, and contains Thirty Two Blocks. Each Block contains 20 lots, except Blocks 7-8-9-10-23-24-25 and 26 which contain Fourteen lots each. Size of Lots 22 feet by 22 feet- Width of Alleys 4 feet.

The McPherson Cemetery Company a corporation duly organized under the laws of the State of Kansas, having its office in the City of McPherson Kansas, and the lawful owner of the above described land, has dedicated said land and executed the annexed plat for the purpose of a cemetery. In Witness Whereof, The said McPherson Cemetery Company has caused its President and Secretary to subscribe hereunto their names and affix the seal of said Company at the City of McPherson this 27th day of May 1881

Mc. P. Simpson President
 J. A. Fleisher Secretary

State of Kansas }
 McPherson County }
 On this 27th day of May, 1881, before me Joshua Leonard a Notary Public in and for said County in the State aforesaid, came Mc. P. Simpson, President, and J. A. Fleisher, Secretary of the McPherson Cemetery Company, and acknowledged the execution of the annexed plat as the act of said McPherson Cemetery Company by them as President and Secretary as aforesaid. Whereof witness my hand and Seal on the day and year in this certificate first above written.

Joshua Leonard

Term expires Oct. 14 - 1883.

Notary Public

State of Kansas, County of McPherson, ss. A true copy as filed May 27th 1881, at 5 o'clock P. M.

James B. Darrak
Register of Deeds.

State of Kansas }
 McPherson County }
 A true Transcript
 of plat in Volume B
 page #13 May 12, 1887
 B. A. [Signature]

For Review of Plat Plan see Plat Book No. 3 Page 16.